



Acoustical Surfaces, Inc.

SOUNDPROOFING, ACOUSTICS, NOISE & VIBRATION CONTROL SPECIALISTS

123 Columbia Court North • Suite 201 • Chaska, MN 55318
 (952) 448-5300 • Fax (952) 448-2613 • (800) 448-0121

Email: sales@acousticalsurfaces.com
 Visit our Website: www.acousticalsurfaces.com

We Identify and **S.T.O.P.** Your Noise Problems

Filename

Test#7 - 2 PEPP

ASTM C423 – Sound Absorption

Project Folder	Client	Product	Model #	Quantity	Comment
	Acoustical Surfaces	Absorption Material		1	1" PEPP with insulayment

Sample Size – Wt

95.0 in x 95.5 in x – 0 lbs.

Sample Description #

8 Panels – 1" PEPP Arranged in 2 x 4 Fashion : with layer of Insulaymnt™ by Quiet Walk :

Type A Mounting

Time Stamp

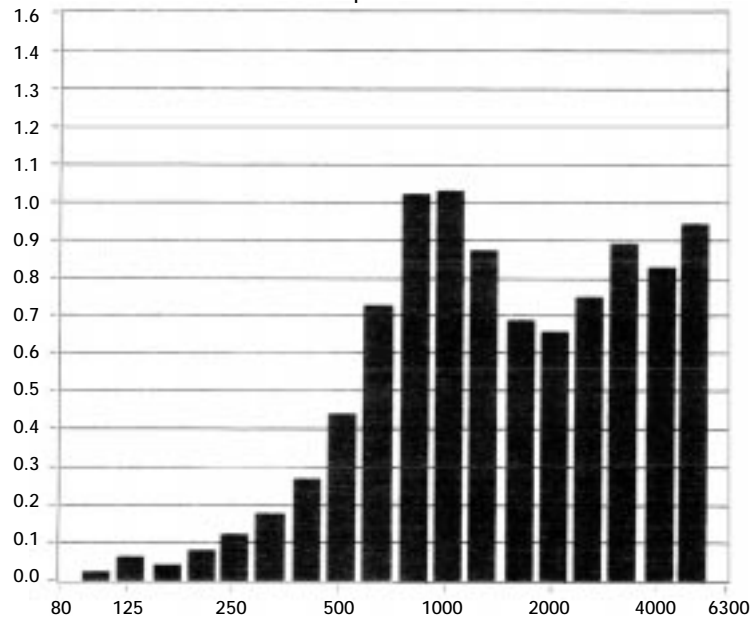
Wed. Oct. 30, 2002 – 11:14 AM

Total Sample Area 63.0 ft²

F (Hz)	Absorption Coefficient	Absorption (Sabins)*
100	0.02	1.04
125	0.06	3.58
160	0.04	2.47
200	0.08	5.10
250	0.12	7.43
315	0.18	11.54
400	0.27	17.14
500	0.44	27.68
630	0.73	45.94
800	1.02	63.98
1000	1.03	64.66
1250	0.87	54.88
1600	0.69	43.30
2000	0.66	41.73
2500	0.75	47.28
3150	0.89	56.18
4000	0.83	52.51
5000	0.94	59.00

Absorption Coefficient

Sound Absorption Coefficients



Temp (*C) R.H. (%) ATM (mbar)

22.0

63

990

*Total absorption based on 63.0 ft²

$$SAA = 0.57 \quad NRC = 0.55$$