

The Future's Quieter

- Quiet Sites
- Less Complaints
- More Construction Business

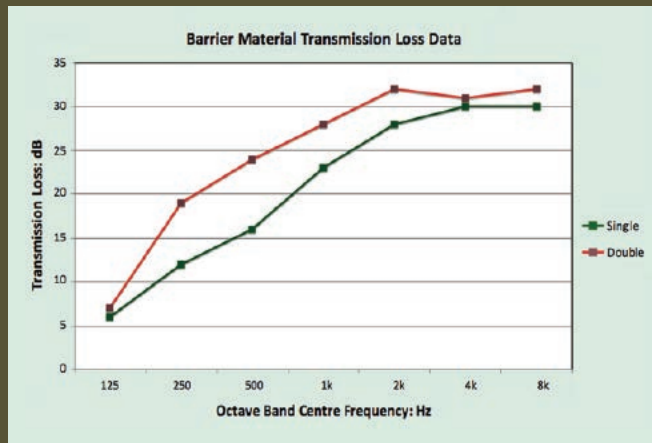


H-Series Brochure

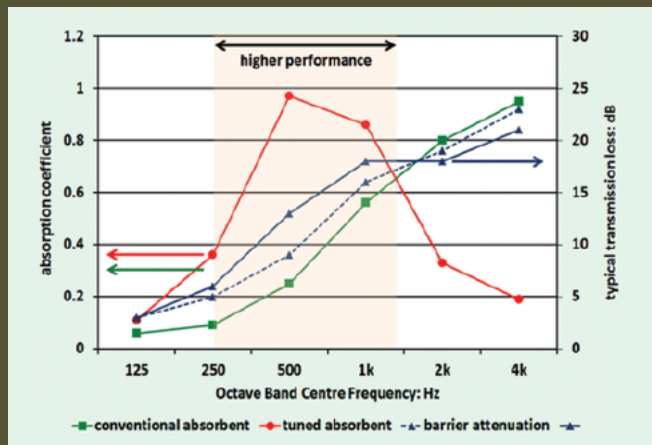
- Mission
- Strategy
- Products
- Performance
- Distribution

Acoustic absorbent performance

Barrier performance



Barrier performance: pink noise






GMT 08:00

In a mature, vibrant society, noise is inevitable. This can be noise from trucks, buses, cars, trains, aircraft and other means of transport. There can also be noise from nearby industry, shops and entertainment venues, construction sites and other trade and business premises. In addition to this, it can be noise that stems from people and activities in the community around us.

The traditional definition of noise is “unwanted or disturbing sound”.

Excessive noise can give rise to higher blood pressure, hearing damage and sleeping disorders. It can trigger or aggravate illness, as well as causing anxiety attacks and depression. If children are exposed to noise over longer periods, their ability to develop language and to learn can be seriously affected. Undesirable noise can also influence children’s motivation and concentration, resulting in difficulties with memory and learning, as well as affecting their ability to tackle difficult tasks.



More than 30% of the population are regularly exposed to noise that impacts negatively on their health.

...by using Echo Barriers, you will assist in reducing the effect noise has on individuals!

When Echo Barrier began operations, no one could have envisaged what situations regarding noise pollution were to emerge. The idea that a construction site could be forced to cease operation because of unwanted noise was unheard of. Now, the obligation on the part of contractors to select and properly maintain the quietest suitable equipment and machinery is becoming much stronger.

KEEPING THE PEACE WITH



Coming soon. The low impact Echo H3.



The Future's Quieter

They are the new generation of Echo Barriers, successor to the **award winning** H2.

The latest tweaks in design and ultra effective sound damping core, refined from the past 30 years of experience in noise mitigation, decimate noise from the targeted source by up to 30dB and diminish the exacerbating ugliness of work sites.

It is guaranteed to minimise complaints.



Did you know? You can now order **colored** barriers using your own corporate branding!



New Colours for Enhanced Work Site Aesthetic

Echo Barriers are available as standard in the rich olive green (RAL 6003) as seen throughout this brochure, however, we are also able to provide these in a range of alternative colours as displayed, to suit your needs and requirements.

These all work to the same specifications, proving the same standard as the original, rich olive Echo Barrier and can be branded with your logo if required.

Below is a rough RAL reference guide to the new colours.

RAL Colour Guide

NB. this is not a definitive guide. More colours will be available in future and the ones listed here are subject to availability, particularly between July - 15 September. Swatches are not true to life.

	1) 1003	2) 1014	3) 1018	4) 2008	5) 3002	6) 3005	7) 5002
RAL*	8) 5010	9) 5012	10) 5013	11) 6001	12) 6003	13) 6005	14) 6026
	15) 7016	16) 7035	17) 8012	18) 9005	19) 9006	20) 9010	21) 9016



Mission



Our mission is to drive awareness of noise pollution, and provide a product that is effective in mitigating its impact on public health and well-being that can be implemented in any situation.

Both the Echo Barrier and the Echo Barrier H₂O Tent (details on page 10) are quick and easy to install and de-install. They are able to provide your company with the ability to demonstrate awareness of noise pollution and to provide a nicer environment, whilst offering a blinding to the exacerbating ugliness of work sites with the polished finish that Echo Barrier provides.

Noise mitigation is part of a holistic philosophy of environmental responsibility.

Successful companies are the ones that really seize the opportunity to reduce their energy usage and waste. We have a 'reduce, reuse and recycle' mentality that is core to the way we work.

We make a promise of environmental harm reduction. We need the integrity of this promise at the heart of our business in order for our mission to remain unambiguous, and to carry on inspiring the innovation of the exceptional Echo Barrier range.

We carry out a carbon life cycle analysis on our products, and always aim to identify opportunities to increase the overall sustainability of our product.

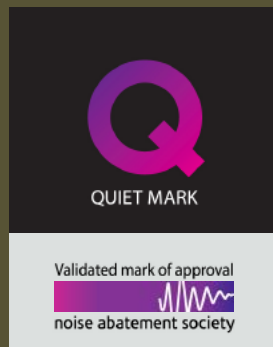


Echo Barrier Eyelets

Strategy

Our strategy to counter noise pollution is, and has always been, to innovate, incorporate and evolve.

30 years of commitment and hard work has not gone unnoticed. At the 2011 UK Noise Abatement Society Awards, director Peter Wilson accepted the award from both the Society and by the Institute of Acoustics in recognition of the H-Series' unbeatable noise mitigation and elegant design. This year we have launched the low impact H-Series (see overleaf) as well as the H₂O tent: the acoustic enclosure against noise dust and weather.



Products - Echo H-Series

Acoustic Barrier System

“We would recommend Echo Barrier to any contractor looking to contain excessive noise on their worksites” -

Balfour Beatty

Our H-Series range of barriers are designed with the versatility to suit any application, they are ideal for **Road, Rail, Manufacturing, Construction, Demolition,** perfectly suited even for **Music and Sporting Events.**

It is a temporary, effective noise mitigation system, that is weatherproof, lightweight and easy to fit and transport. As well as providing exceptional acoustic performance.

The Echo H-Series ensures noise management is simple, fast and highly effective!

Cost

Offering the best in cost vs. performance, it delivers exceptional return on investment

Handling

Light, compact and hard-wearing, the unique self-locking mechanism makes transportation and storage easy

Installation

Its innovative design reduces on-site installation time by up to 70% compared to other screening methods

K e y F e a t u r e s

Performance

Noise is literally soaked up by its acoustic properties with the option of enhanced performance by adding extra barriers

Safety

Unique night time reflective strips along with its fire and weather resistant construction contributes to site safety

Best Practice

Helping industry to attain best practice in noise control with best-in-class acoustic performance

Advertising

Its large surface area provides excellent options for bespoke branding and advertising

Support

Unparalleled technical support, including advice on usage and on-site configuration to ensure optimum performance

Accessories



NEW! Vertical Fitting Kits to hang barriers together freely over large vertical spaces in a secure manner. This product allows Echo Barriers to be fitted in unimaginably varied spaces. Perfect for the challenges of noise on grand architectural projects and the like.



Quickly secure barriers in place, making for easy and accurate fitting to prevent acoustic leaks.

Fitting kits – one hook and two elastics per barrier (hook also hangs adjoining barrier).

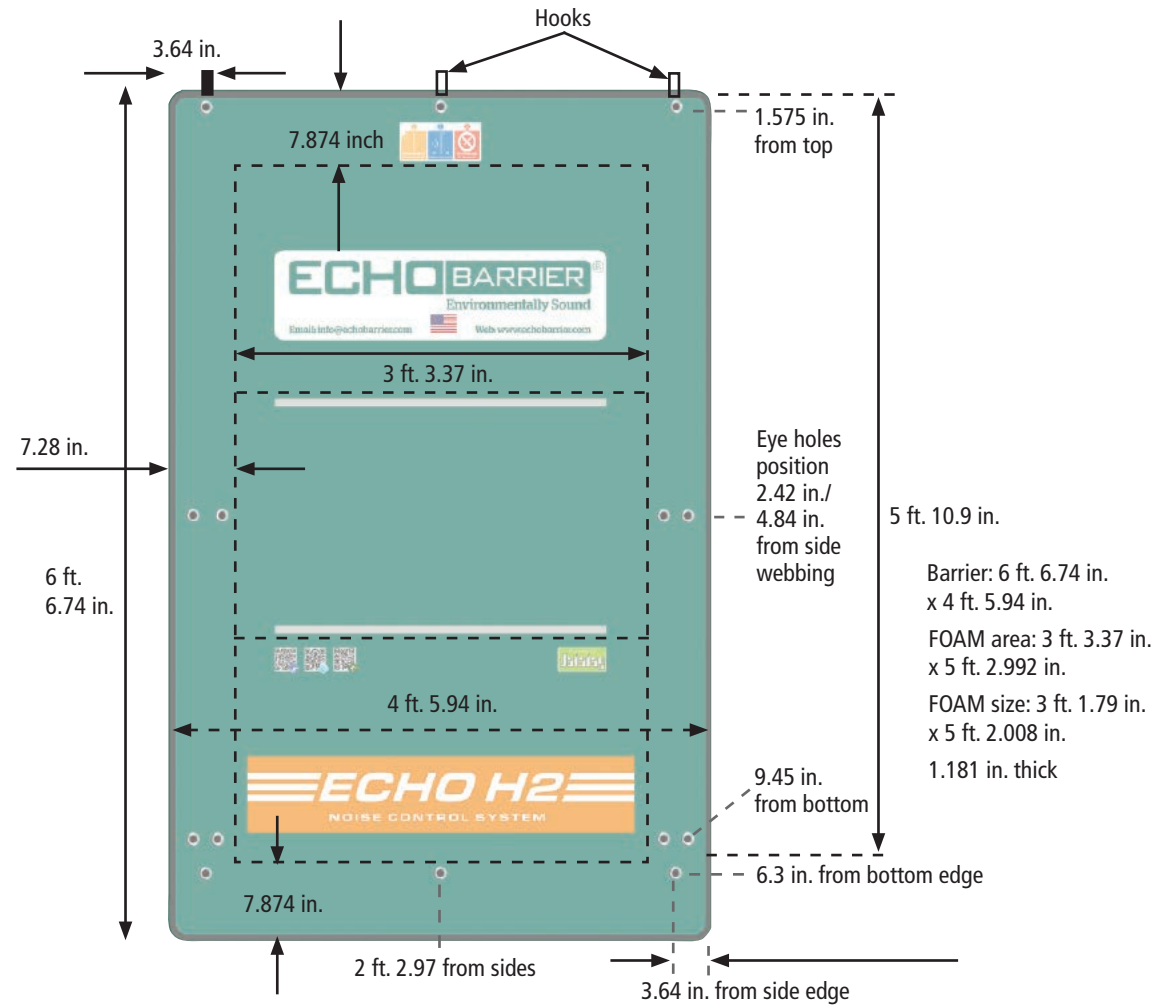


Reversible hooks for different fence sizes. Attach multiple barriers to one hook.



Vinyl covered multi-strand cable used with padlock to secure barriers through eyelets and fence.

Echo Barrier H2 USA Dimensions



Enquire today about the



ECHO H-SERIES

NOISE CONTROL SYSTEM

Products - Echo H₂O

Acoustic Enclosure System

The new Echo H₂O tent brings advanced noise mitigation to public and limited space projects.

The Echo H₂O tent is a weatherproof, unobtrusive, modular and lightweight acoustic enclosure that can be installed in just 15 minutes! It is perfect for roadworks, angle grinders, cutting, drilling, compressors, internal works, event tents, inclement weather projects and night time projects.



H2O Acoustic Enclosure System

Key Features

- 15 minute installation
- Weatherproof
- Aesthetically pleasing
- Instant work perimeter
- Up to 30dB noise reduction
- Dust containment
- Lightweight yet sturdy
- Modular level of enclosure



Technical Data

Polyester Fabric:

Single sided, flame resistant, UV and hydrolysis resistant, polyurethane coated substrate with a fluorocarbon, mould resistant finish.

The base fabric is a 100% Polyester filament yarn woven fabric with a 350d or 500d plain weave and classified as 5oz or 6oz/sq yd. Woven In 60 Inch widths with a yam weight of 156g/yd.

Property

Method of Test

Minimum Value

Property	Method of Test	Minimum Value
Coated Weight	BS 3424/	
Coating Weight	SA	4.5oz / yd ² 1.8oz / yd ²
Coating Adhesion	9B	38N / 2" 36N / 2"
Tensile Strength	6 CRE	1100N 890N
Tear Strength	7B	36N 36N
Hydrostatic Head	29A	39.3" / 23.6" H ₂ O

Flame Resistance

The material will meet the requirements of the following recognised standards.

BS 5867 : Part 2 : 1980, Type B, BS 6249 : Part 1 : 1982, Class C, BS 4F 100 / C.A.A No. 8 Issue 2 Method 2.2b as 7837:1996 BS 6341 : 1983, Class E, JIS-Z 2150

The test values given are only valid at the point of despatch. We reserve the right to alter or amend this specification without prior notice.

Performance

ECHOBARRIER
Environmentally Sound

Echo Barriers have been tested to the limit and proven time and again in high profile and challenging situations including the WTC construction site and a presidential 2nd term inaugural address.

Factors behind good performance

Echo Barrier has world-leading acoustic engineers constantly researching and developing new solutions to ensure we remain global market leaders in our sector.

The basic acoustic elements of the barriers comprise a mass layer and a carefully designed acoustic absorbent layer. These not only attenuate the direct transmission of sound, but also reduce the sound reflected back towards the source to improve the overall performance.

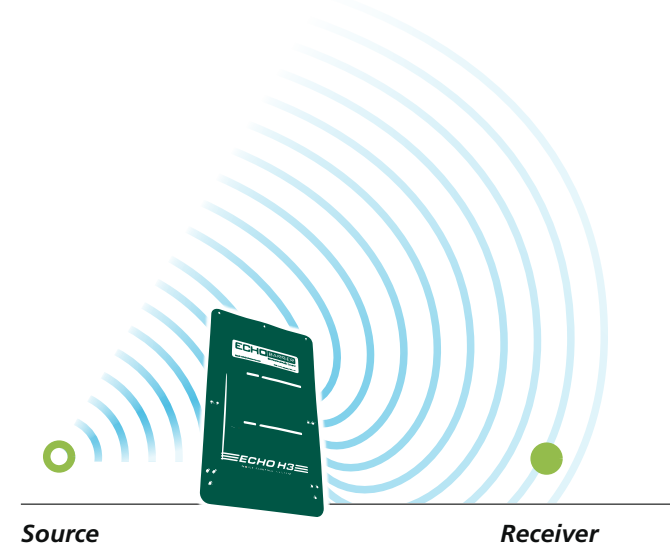
To achieve optimum acoustic performance, three factors need to be taken into account:

1. Geometry – the barrier needs to be placed as close to the noise source as possible in order to maximise the ‘acoustic shadow’.

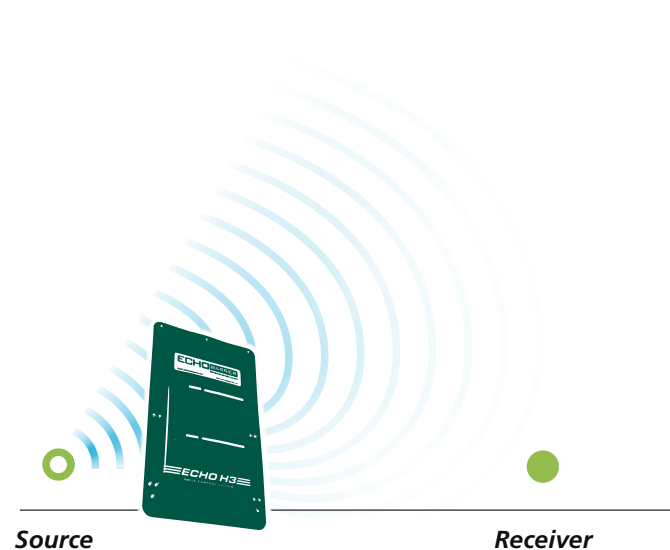
2. Mass – the mass of the impermeable material used determines the noise attenuation but only if the barrier is infinitely large. As this isn’t practicable because noise passes over the barrier, there is an optimum mass/ geometry configuration that gives the best attenuation without compromising handling.

3. Absorption – a well designed barrier must include acoustic absorbent materials on the noise source side to ‘soak up’ the sound and minimise reflections. The high-tech material we have developed has not only been tuned to the optimum frequency range, but is safe to handle and is also, uniquely, a waterproof acoustic absorbent layer.

Poor barrier position



Good barrier position

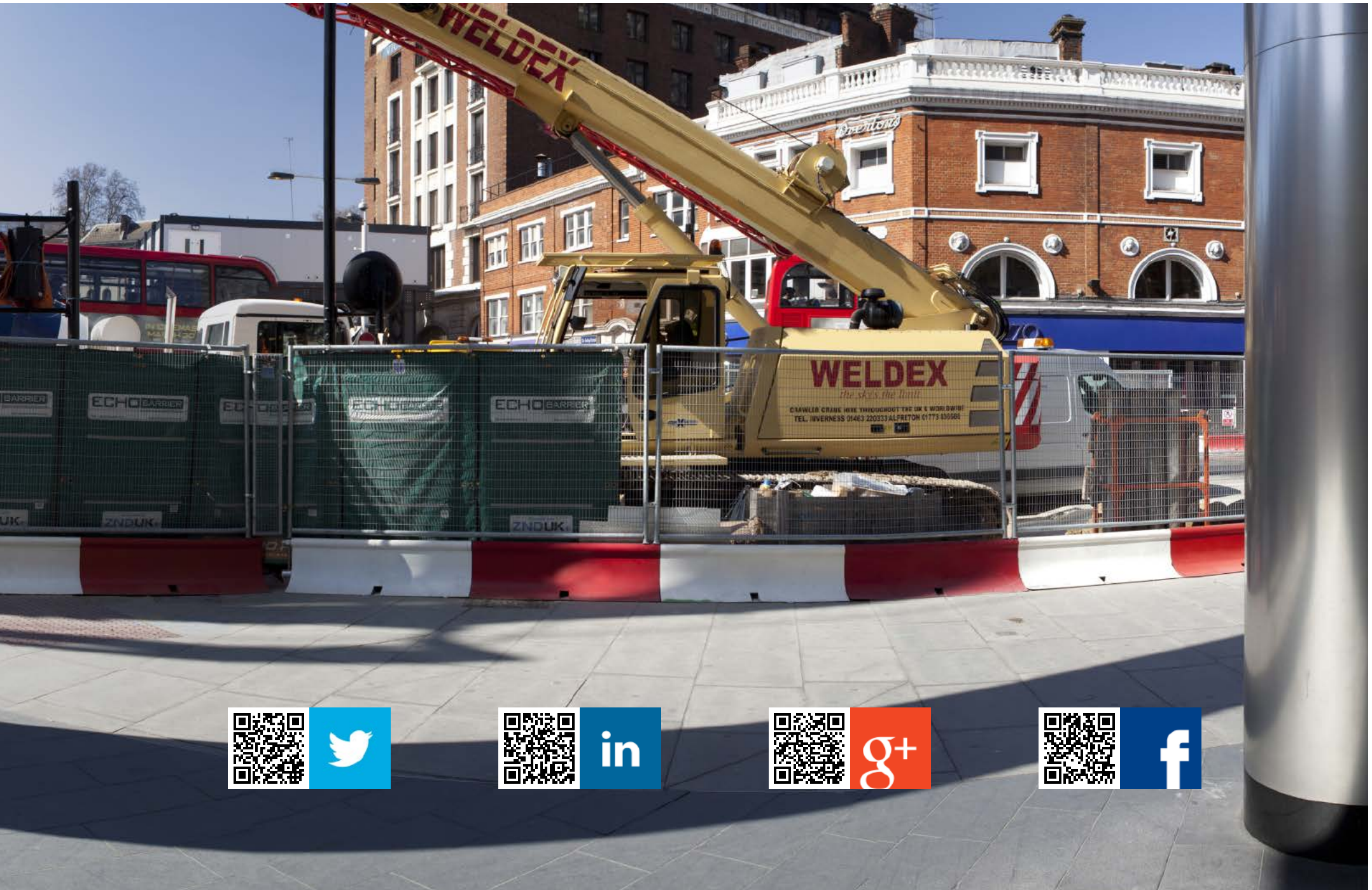


The commercial benefits of using Echo Barriers are endless and include extending site operating hours, reducing operational costs and minimising complaints, in turn enhancing your organisations reputation...

...You can become part of an international pedigree of companies who keep the peace using Echo Barrier products. Gain recognition by joining the fight against unwanted noise.



Panorama, Victoria Underground Station

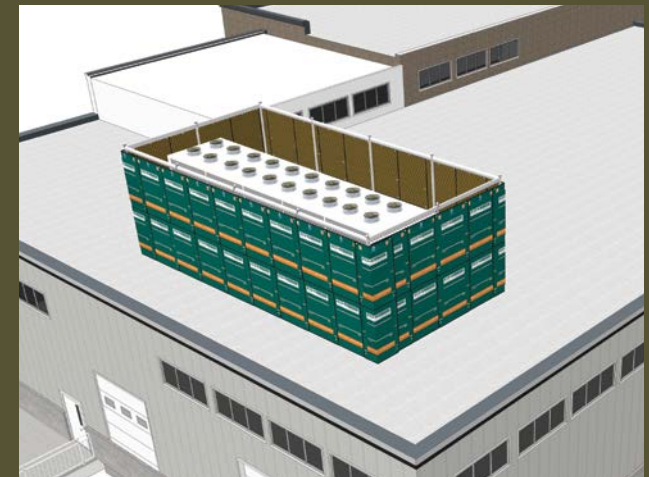
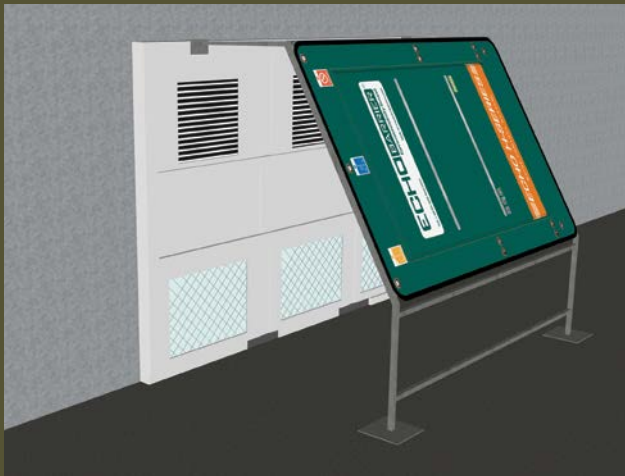




Echo Barriers - Main Stage, 17:00 (GMT) Eastern Electrics Festival Day 1, London



Echo Barrier's amazing versatility



DISTRIBUTED BY:

Acoustical Surfaces, Inc.

123 Columbia Court North
Chaska, MN 55318

Website: www.acousticalsurfaces.com
Phone: 800.854.2667