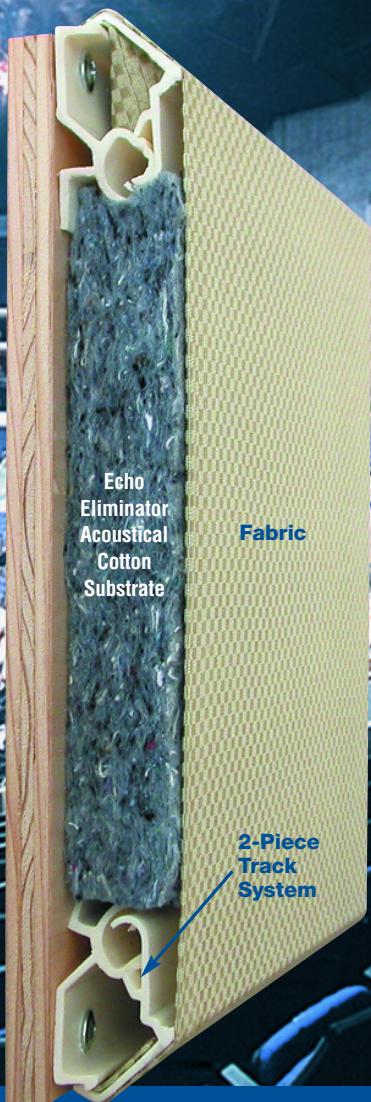


Wallmate® THE PREFERRED CHOICE of Specifiers, Installers and Owners

09 84 00/WAL
BuyLine 8317



Wallmate®
at the
Los Angeles
STAPLES CENTER

“THE PERFECT PAIR”
Wallmate® and Echo Eliminator™
Acoustical Cotton Sound Absorber

wallmate®

High Tension, Acoustical Wall System
WE COVER SOUND CONTROL

- **WALLMATE® DESIGN:** Unique two-piece hinged track system allows installer to stretch, set tension and lock fabric into place. Installer can easily install, adjust, remove and replace fabric when necessary.
- **SOUND CONTROL:** Wallmate® and Echo Eliminator™ provide high performance sound control on any surface while also adding the designer upholstered look to enhance any decor.

Wallmate® helped control severe reverberation and reflection problems at 950,000 square foot LOS ANGELES STAPLES CENTER

- | | | | |
|--|---|--|--------------------------------------|
| ■ Covers Any Surface | ■ System is Reusable | ■ ASTM E-84 Class A | ■ Choice of Installer |
| ■ Excellent Acoustical Control and Wall Finish | ■ Fabrics are Removable and Replaceable | ■ Cost Effective and Uses Environmentally Friendly Materials | ■ Almost Unlimited Choice of Fabrics |

AVAILABLE EXCLUSIVELY FROM



ACOUSTICAL SURFACES, INC.

SOUNDPROOFING, ACOUSTICS, NOISE & VIBRATION CONTROL SPECIALISTS
123 Columbia Court North, Suite 201, Chaska, MN 55318
1-888-223-5633
952-448-5323 • Fax: 952-448-2613
www.acousticalsurfaces.com
e-mail: sales@acousticalsurfaces.com

Why Specify Wallmate® High Tension Acoustical Wall System?

The Unique Wallmate® Design Is Very User Friendly and It Eliminates the Expense of a “Certified” Installer.

Profit with Wallmate. Adding to your bottom line is a sound idea! Truly competitive bidding or even “Do-It-Yourself” is FINALLY available with a high tension stretch fabric system.

Wallmate® Creates High Performance Sound Environments and Beautiful Walls, Without Harm to You or the Environment.

Acoustically treated walls are often essential in this digitized, amplified, surround sound age of technology.

Increased demand for sound control has encouraged many construction professionals to add acoustical substrates and decorative fabric walls to their list of required acoustical finishes.

Wallmate® installs over Echo Eliminator™ cotton acoustical substrate and is the easiest two-piece, high tension fabric mounting system available for custom on-site installation.

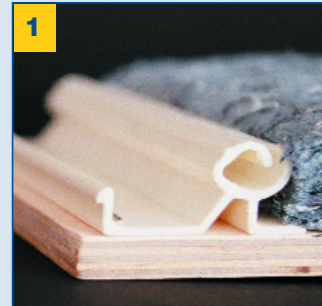
Wallmate's® unique engineering and design yields professional results. Highly tensioned spans of fabric with convenient locking and unlocking capability that never excludes or restricts access to its system.

LOWER COSTS WITH COMPETITIVE BIDDING:

You no longer need to hire an exclusive local contractor to install a specified proprietary stretch fabric wall system. Wallmate® can be approved as an equal to all specified systems and has many advantages over the competition. Wallmate's® unique, user friendly, hinged track system allows almost anyone to install a professional looking, high tension, stretchable fabric acoustical wall system with panel sizes, limited only by fabric availability.

WALLMATE® products are Patent Pending, domestic and international rights are reserved.

TRACK DESIGN



1

Two piece system creates easy access for mounting.



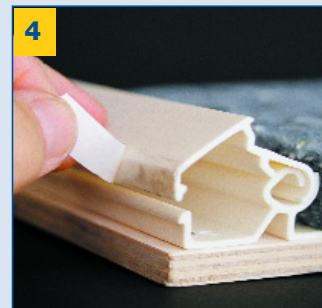
2

Outer profile snaps into place forming a working hinge.



3

Rotation to lock position creates great strength and rigidity.



4

Protective cover is removed from alignment tape.

FABRIC APPLICATION



5

Fabric is easily positioned to follow threadline or pattern.



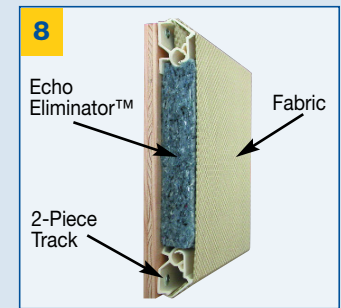
6

Outer profile rotating toward closed position will stretch fabric.



7

Final “lock-in” will set the “tension.”



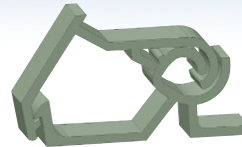
8

Wallmate® high tension, acoustical wall system.

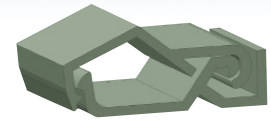
Specify Wallmate® Two-Piece Track System with Echo Eliminator™

Wallmate® Track System “The Easiest to Use and Best System Ever Invented.”

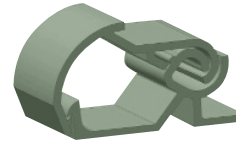
- Quality engineered unique two-piece snap hinge
- Highest quality ABS resins
- Class A ASTM E-84 fire rating
- Passed UPTT toxicity test required by New York
- Qualified for use worldwide
- Tracks available in 102" (8.5 ft.) lengths
- Two-piece track design, increases strength and rigidity
- High tension keeps fabric smooth
- Easy to install, adjust or replace fabric
- Panel size limited only by fabric size and availability
- No wall preparation necessary
- Easy to cut and drill with standard woodworking tools



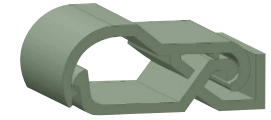
1-1/16 Inch Bevel



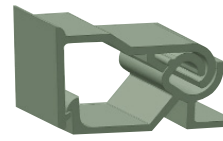
9/16 Inch Bevel



1-1/16 Inch Radius



9/16 Inch Radius



1-1/16 Inch Square



9/16 Inch Square

Acoustical Substrate Echo Eliminator™ Acoustical Sound Absorber.

- Environmentally friendly acoustical cotton sound absorber
- Use cotton rather than fiberglass for your next acoustical project
- High performance - noise reduction coefficient NRC to 1.15
- Excellent low frequency absorption coefficient $2" = 1.32 @ 500\text{Hz}$
- ASTM E-84 Class A Fire Retardant
- Fungi, mold and mildew resistant
- Durable, impact resistant, resilient, lightweight and easy to install
- Lower cost, or better performance than many other acoustical materials
- No itchy fiberglass - no formaldehyde - no VOC's - requires no warning labels
- Soft textured surface is pleasing to the eye and touch - “impact friendly”
- Acoustical and thermal insulating properties superior to foam, fiberglass and cementitious wood fiber
- Environmentally friendly and 100% recyclable “GREEN” product
- Made in the USA with recycled denim and cotton materials
- LEED (Leadership in Energy and Environmental Design) eligible

Acoustical sealants and adhesives also available.

Echo Eliminator™ Acoustical Cotton Panel – Sound Absorption / Noise Reduction									
Nom. Size	Weight	125Hz	250Hz	500Hz	1KHz	2KHz	4KHz	NRC	
1" x 2' x 4'	1/4 lb./sf 3 lb./cf	.08	.31	.79	1.01	1.00	.99	.80	
2" x 2' x 4'	1/2 lb./sf 3 lb./cf	.35	.94	1.32	1.22	1.06	1.03	1.15	
1" x 2' x 4'	1/2 lb./sf 6 lb./cf	.07	.30	.86	1.10	1.05	1.03	.85	

A truly unique high performance, sound absorbing material made from recycled cotton, making Wallmate and Echo Eliminator the “PERFECT PAIR.”

BUILDING A “GREENER” TOMORROW



LEED
LEADERSHIP IN ENERGY & ENVIRONMENTAL DESIGN



May Qualify for LEED Credits.

ASTM E-84 Class A Fire Retardant



Echo Eliminator™ Acoustical Cotton is fire retardant, fungi, mold & mildew resistant and has been tested for numerous acoustical and thermal insulating properties including the following ASTM specification and test methods:

E84, C665, C518, E96, E970, C423-98, E97-97, E413-87, E492-90, E989-89; C739-97 Sec. 9, 11, 13, 15; CA. Lic.#TI-1367 Reg.#CA-T367AZ

wallmate®

Sound control has never looked this good and been so easy to install



Cecil B DeMille Screening Room, Sony Pictures.



Century Plaza Hotel, Main Ballroom, echo problems resolved.



Enterprise Recording Studios self installed the Wallmate® System to their specifications.

FOR WALLMATE® INSTALLATION INSTRUCTIONS AND SPECIFICATIONS VISIT:
http://www.acousticalsurfaces.com/softwall_monowalls/wallmate.htm
 FOR ECHO ELIMINATOR™ INSTALLATION INSTRUCTIONS AND SPECIFICATIONS VISIT:
http://www.acousticalsurfaces.com/echo_eliminator/wall_panel.htm
 FOR MORE FABRIC SELECTIONS VISIT:
http://www.acousticalsurfaces.com/acoustical_fabric/index.htm

WALLMATE® products are Patent Pending, domestic and international rights are reserved.



CONTACT INFORMATION:

ACOUSTICAL SURFACES, INC.

SOUNDPROOFING, ACOUSTICS, NOISE & VIBRATION CONTROL SPECIALISTS

123 Columbia Court North, Suite 201, Chaska, MN 55318

1-888-223-5633

952-448-5323 • Fax: 952-448-2613

www.acousticalsurfaces.com

e-mail: sales@acousticalsurfaces.com

INTRODUCING ACOUSTI SUEDE™

The Finest Acoustical Fabric Available for Interior Decor

- Feels and looks like authentic suede at a fraction of the cost
- A plush interior finish for any application
- Easy to install and maintain
- Excellent acoustical properties
- Stain resistant



Cherry Red - 0002



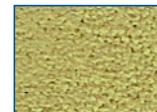
Rusty - 0012



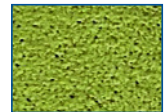
Brownie - 0005



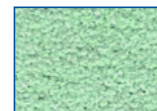
Black Night - 0006



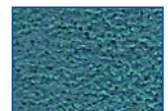
Desert - 0035



Olive Green - 0007



Sea Blue - 0017



Steel Blue - 0004



Brick Yellow - 0015



Pumpkin - 0025



Navy - 0014



Graphite - 0027



Plum - 0022

FLAMMABILITY:

ASTM E-84Class 1 or A

State of CA.

Tech. BulletinPasses

UFACClass 1

NFPA 260Class 1

SALES REPRESENTATIVE:

PRINTED IN THE U.S.A.