



Acoustical Surfaces, Inc.

SOUNDPROOFING, ACOUSTICS, NOISE & VIBRATION CONTROL SPECIALISTS

123 Columbia Court North • Suite 201 • Chaska, MN 55318

(952) 448-5300 • Fax (952) 448-2613 • (800) 448-0121

Email: sales@acousticalsurfaces.com

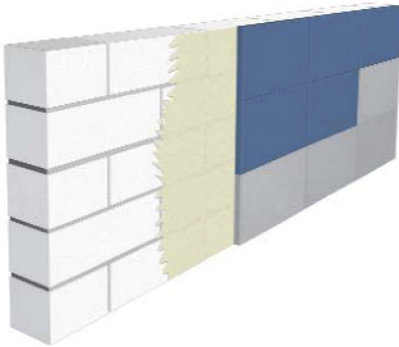
Visit our Website: www.acousticalsurfaces.com

We Identify and S.T.O.P. Your Noise Problems

PHONSTOP™ Ceiling and Wall Tiles

INSTALLATION INSTRUCTIONS

PHONSTOP V Ceiling and Wall Tiles



Adhesive applications to walls or ceilings:



- Prime structurally sound, relatively smooth, clean, dry and level wall or ceiling surface with PHONSTOP pt17 solvent-free primer.
 - Use a ¼" (6 mm) nap roller for smooth surfaces.
 - Use a ¾" (10 mm) nap roller for rougher surfaces.
 - Let dry 20 minutes or more.
- Adhere PHONSTOP to primer-treated surface.
 - Depending on desired design, orient the tiles with the square or beveled edge facing toward the exposed side.

- Using a mixing paddle on a corded drill, mix 1 bag of PHONSTOP pt81 adhesive with approximately 2 gallons (7.57 liters) of clean water per bag. Adjust for smaller batches, approx. 2 parts adhesive to 1 part water.
- Apply adhesive to the back of each tile using a ¾" (10 mm) notched trowel.



- Be careful not to get any adhesive on the exposed tile faces.
- Place panel in desired location (maximum 30 minutes open time) and secure by gently moving the tile back and forth.
- PHONSTOP is sensitive to impact during installation.



- PHONSTOP can be cut with a hand or table saw.
 - Sand edges using a sanding block or another piece of PHONSTOP.

Painting:

- Paint using a non-bridging paint applied with an airless sprayer.
- Unpainted outdoor, weather-exposed conditions:
- Using a roller or airless sprayer, apply 1 gallon (3.79 liters) of PHONSTOP pa13 sealer per 100 square feet (9.29 meters²) over the panels' permeable finished surfaces for additional durability.
- Plastering (seamless monolithic appearance indoors):
- Treat the seams with a skim coat – let dry 1/2 hour or more.
 - Prime exposed PHONSTOP surface with PHONSTOP pt17 primer.
 - Use a ¼" (6 mm) nap roller for smooth surfaces.
 - Use a ¾" (10 mm) nap roller for rougher surfaces.
 - Apply skim coat of PHONSTOP pa85 plaster.
 - Do not add water to plaster.
 - Mix tub contents well with a mixing paddle.
 - Plaster should not be painted.
 - Plaster is manually applied. As a result, the surface may be uneven.

Continued on next page...



Acoustical Surfaces, Inc.

SOUNDPROOFING, ACOUSTICS, NOISE & VIBRATION CONTROL SPECIALISTS

123 Columbia Court North • Suite 201 • Chaska, MN 55318

(952) 448-5300 • Fax (952) 448-2613 • (800) 448-0121

Email: sales@acousticalsurfaces.com

Visit our Website: www.acousticalsurfaces.com

We Identify and S.T.O.P. Your Noise Problem

PHONSTOP™ Ceiling and Wall Tiles

INSTALLATION INSTRUCTIONS *Continued*

PHONSTOP E Ceiling Tiles

Ceiling grid applications for ceilings:

- Fits standard 15/16" ceiling grid systems.
 - Drop ceiling tile into place.
 - Gently press tiles from above (do not pull from the face) to snap them into the grid.
 - PHONSTOP is sensitive to impact during installation.
- To prevent soiling, wear clean cotton or canvas gloves to handle tiles.
 - PHONSTOP can be cut with a hand or table saw.
 - Sand edges using a sanding block or another piece of PHONSTOP.
 - Preferably install PHONSTOP at the end of the construction project.

