



Acoustical Surfaces, Inc.

SOUNDPROOFING, ACOUSTICS, NOISE & VIBRATION CONTROL SPECIALISTS

123 Columbia Court North • Suite 201 • Chaska, MN 55318
 (952) 448-5300 • Fax (952) 448-2613 • (800) 448-0121

Email: sales@acousticalsurfaces.com
 Visit our Website: www.acousticalsurfaces.com

We Identify and **S.T.O.P.** Your Noise Problems

Filename

Test#13 - 1 PEPP

ASTM C423 – Sound Absorption

Project Folder

Client

Product

Model #

Quantity

Comment

Acoustical Surfaces

Absorption Material

6-Panels

1

1" PEPP type E mounting

Sample Size – Wt

Sample Description #

72.0 in x 95.0 in x – 0 lbs.

6 Panels – 1" PEPP in 16" airspace box : Type E mounting, 6 panels. :

Time Stamp

Wed. Oct. 30, 2002 – 2:26 PM

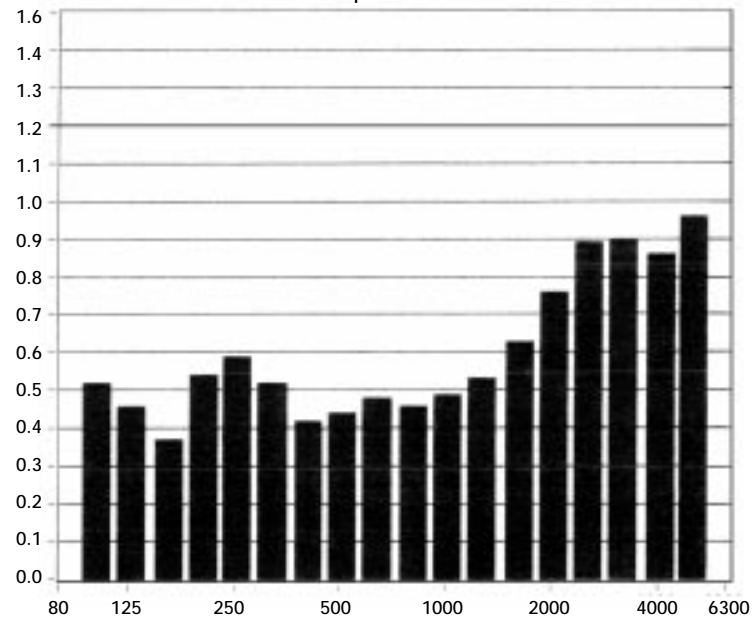
Total Sample Area

47.5 ft²

F (Hz)	Absorption Coefficient	Absorption (Sabins)*
100	0.52	24.50
125	0.46	22.02
160	0.37	17.62
200	0.54	25.51
250	0.59	27.84
315	0.52	24.52
400	0.42	20.17
500	0.44	20.99
630	0.48	22.76
800	0.46	21.70
1000	0.49	23.40
1250	0.53	25.17
1600	0.63	29.99
2000	0.76	36.14
2500	0.89	42.38
3150	0.90	42.84
4000	0.86	40.68
5000	0.96	45.66

Absorption Coefficient

Sound Absorption Coefficients



Temp (*C)

R.H. (%)

ATM (mbar)

22.0

63

990

*Total absorption based on 47.5 ft²

$$SAA = 0.56 \quad NRC = 0.55$$