



Acoustical Surfaces, Inc.

SOUNDPROOFING, ACOUSTICS, NOISE & VIBRATION CONTROL SPECIALISTS

123 Columbia Court North • Suite 201 • Chaska, MN 55318
 (952) 448-5300 • Fax (952) 448-2613 • (800) 448-0121

Email: sales@acousticalsurfaces.com
 Visit our Website: www.acousticalsurfaces.com

We Identify and **S.T.O.P.** Your Noise Problems

Filename

Test#15 - 1 PEPP

ASTM C423 - Sound Absorption

Project Folder	Client	Product	Model #	Quantity	Comment
	Acoustical Surfaces	Absorption Material		1	1" PEPP type E mounting

Sample Size - Wt

72.0 in x 95.0 in x - 0 lbs.

Sample Description #

6 Panels - 1" PEPP in 16" airspace box : Type E mounting, 6 panels. : with glass mat facing up :

Time Stamp

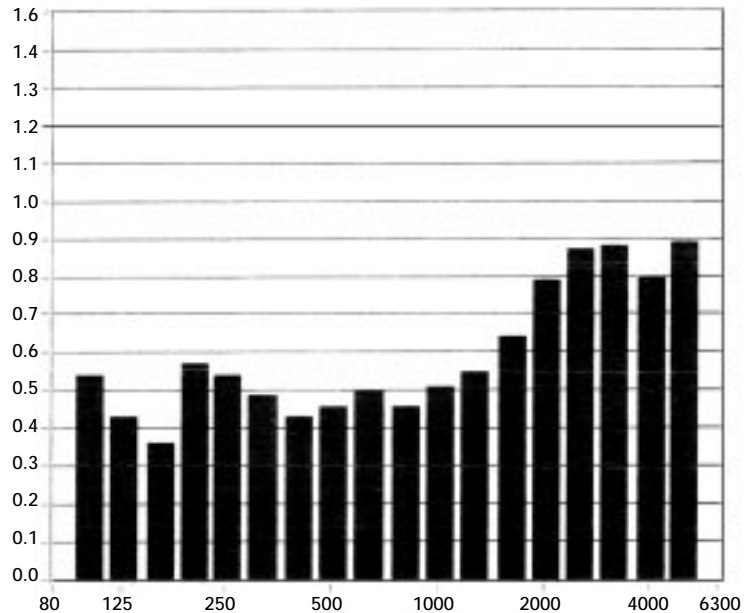
Wed. Oct. 30, 2002 - 3:01 PM

Total Sample Area 47.5 ft²

F (Hz)	Absorption Coefficient	Absorption (Sabins)*
100	0.54	25.62
125	0.43	20.60
160	0.36	16.91
200	0.57	26.97
250	0.54	25.69
315	0.49	23.38
400	0.43	20.43
500	0.46	21.89
630	0.50	23.79
800	0.46	21.88
1000	0.51	24.43
1250	0.55	26.09
1600	0.64	30.29
2000	0.79	37.29
2500	0.87	41.44
3150	0.88	41.76
4000	0.80	38.17
5000	0.89	42.22

Absorption Coefficient

Sound Absorption Coefficients



Temp (*C) R.H. (%) ATM (mbar)

22.0

63

990

*Total absorption based on 47.5 ft²

$$SAA = 0.57 \quad NRC = 0.60$$