



# Acoustical Surfaces, Inc.

SOUNDPROOFING, ACOUSTICS, NOISE & VIBRATION CONTROL SPECIALISTS

123 Columbia Court North • Suite 201 • Chaska, MN 55318  
 (952) 448-5300 • Fax (952) 448-2613 • (800) 448-0121

Email: [sales@acousticalsurfaces.com](mailto:sales@acousticalsurfaces.com)  
 Visit our Website: [www.acousticalsurfaces.com](http://www.acousticalsurfaces.com)

We Identify and **S.T.O.P.** Your Noise Problems

Filename

Test#16 - 1 PEPP

## ASTM C423 – Sound Absorption

Project Folder	Client	Product	Model #	Quantity	Comment
	Acoustical Surfaces	Absorption Material		1	1" PEPP type E mounting

Sample Size – Wt

72.0 in x 95.0 in x – 0 lbs.

Sample Description #

1" PEPP in 16" airspace box : Type E mounting, 6 panels. : with glass mat facing down, into mounting box

Time Stamp

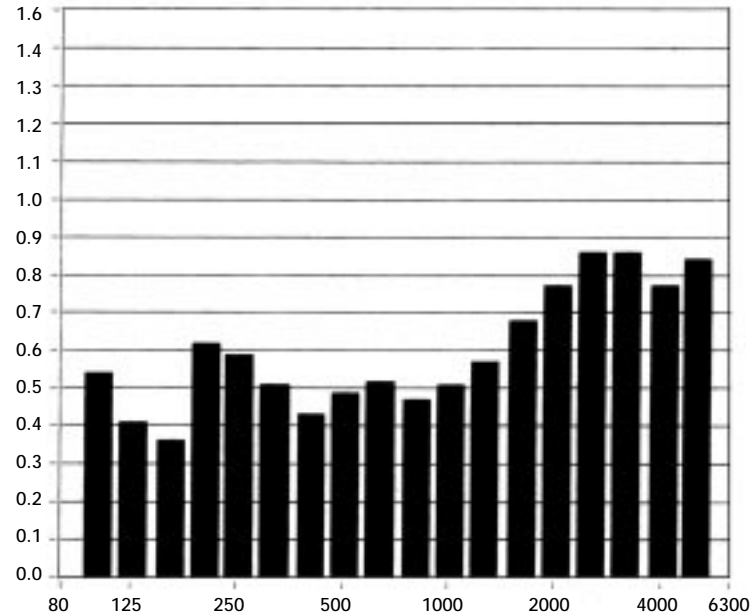
Wed. Oct. 30, 2002 – 3:18 PM

Total Sample Area 47.5 ft<sup>2</sup>

F (Hz)	Absorption Coefficient	Absorption (Sabins)*
100	0.54	25.62
125	0.41	19.65
160	0.36	17.03
200	0.62	29.38
250	0.59	28.00
315	0.51	24.08
400	0.43	20.30
500	0.49	23.13
630	0.52	24.67
800	0.47	22.43
1000	0.51	24.43
1250	0.57	27.04
1600	0.68	32.13
2000	0.77	36.52
2500	0.86	40.98
3150	0.86	40.69
4000	0.77	36.34
5000	0.84	39.74

Absorption Coefficient

### Sound Absorption Coefficients



Temp (\*C) R.H. (%) ATM (mbar)

22.0

63

990

\*Total absorption based on 47.5 ft<sup>2</sup>

$$SAA = 0.59 \quad NRC = 0.60$$