

# Envirocoustic™ Wood Wool

Cementitious Wood Fiber Acoustical Board

## Envirocoustic Wood Wool

Wood Wool is now a leader in the eco-friendly, high-performance, cost-effective acoustical-panel products category. Envirocoustic performs well by absorbing sound while thermally insulating; ecologically, it is simple to produce; and panels are available in many size and color variations that can be designed to fit nearly any décor.

These eco-friendly wood-fiber panels not only liven up a room with design variety, but they also reduce echo and reverberation by sound absorption.

Wood-fiber panels can transform the aesthetics and acoustics of any interior space.



### FEATURES & BENEFITS

- High quality wood wool panels:
  - Durable
  - Consistent finish & color
  - Consistent thickness (+/- .005") & dimensions
  - Clean Corners
  - Square panels
  - Less dust than competition
- Cost-effective - lower cost than other solutions
- Class A Fire Rated
- Low VOC
- Manufactured from 3 simple ingredients: wood fiber, cement, & water
- Versatile - ceiling or wall mount as a surface finish
- Paintable, with wide range of SonoKote™ colors
- An effective sound absorber

**STOP NOISE**

**ACOUSTICAL | SURFACES, INC.**

**CELEBRATING 35 YEARS - SOUNDPROOFING, ACOUSTICS, NOISE & VIBRATION SPECIALISTS**  
952.448.5300 • 800.448.0121 • sales@acousticalsurfaces.com • www.acousticalsurfaces.com



# Envirocoustic Wood Wool

Cementitious Wood Fiber Acoustical Board

AIRPORTS





SHOPPING MALLS



COMMON AREAS



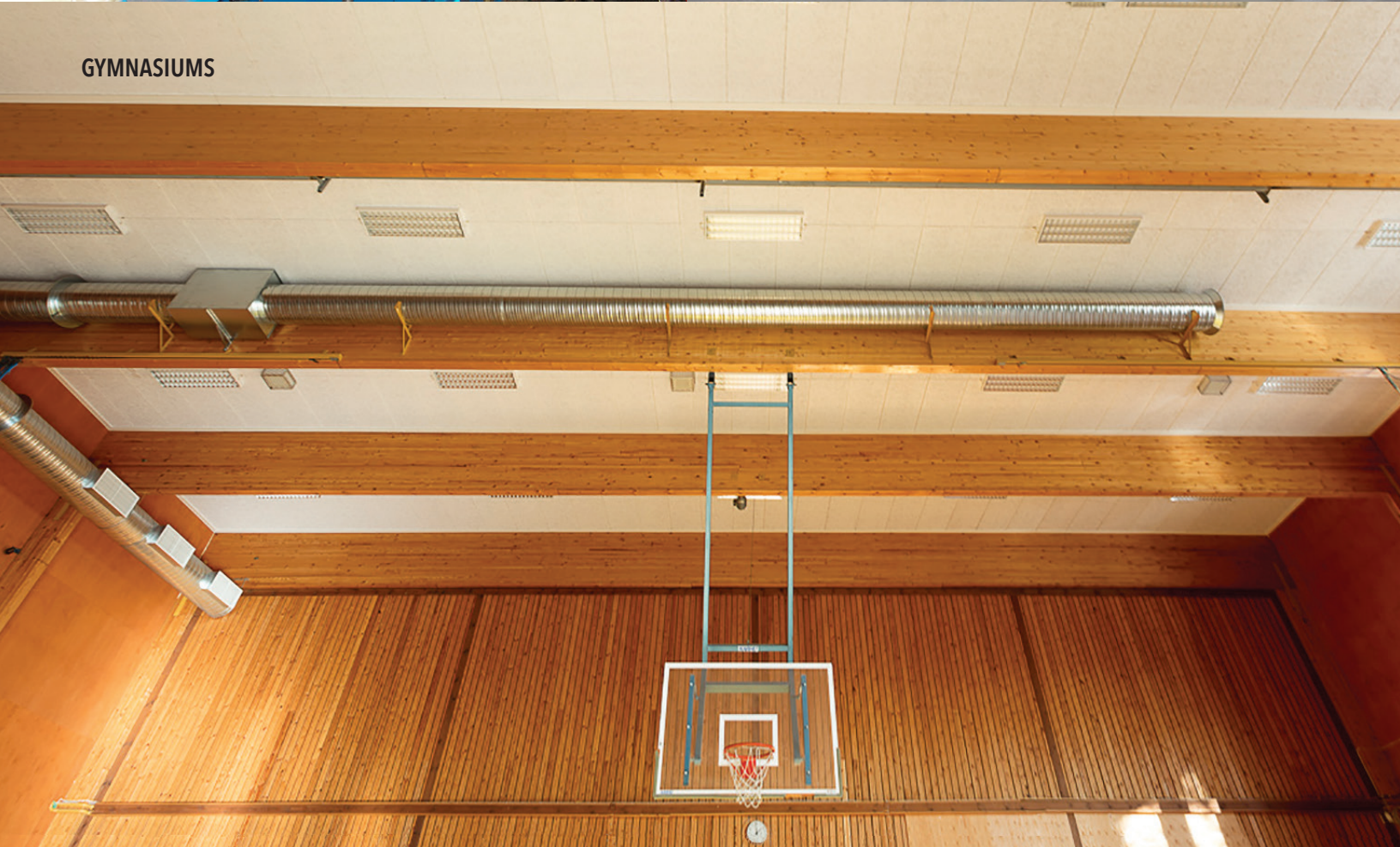
INDUSTRIAL



LIBRARIES



GYMNASIUMS





# Envirocoustic Wood Wool

## Cementitious Wood Fiber Acoustical Board



23.75" x 95.5"



NATURAL

23.75" x 47.75"



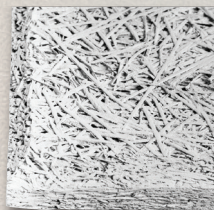
23.75" x 23.75"



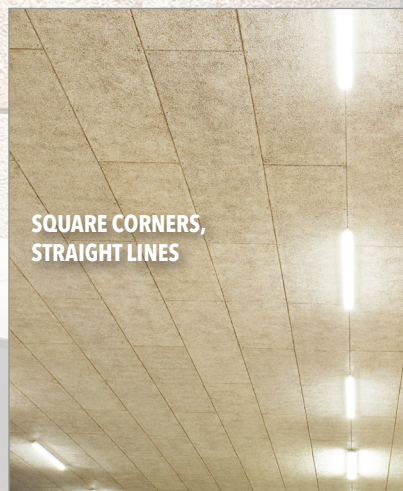
WHITE



Square Edge



Beveled Edge



SQUARE CORNERS,  
STRAIGHT LINES



Tegular Edge

### APPLICATIONS

Schools and civic centers (gymnasiums, classrooms, auditoriums, music practice and band rooms), restaurants and bars, sports and entertainment venues, convention centers, houses of worship, shooting ranges, manufacturing and industrial facilities, parking garages, airports, and more.

### SPECIFICATIONS

#### Sizes:

1" Thick Wall & Ceiling Direct-Attach Panel Sizes – Square or Beveled Edge

- 23.75" x 23.75"
- 23.75" x 47.75"
- 23.75" x 95.5"

1" Thick Drop-In Ceiling Tile Sizes - Square or Tegular Edge

- 23.75" x 23.75"
- 23.75" x 47.75"

1" Thick Hexagonal – Deep-Beveled Edge

- 20" side-to-side (six-sided) dimension

### PANEL INSTALLATION

- Direct attach to wall
- Direct attach to ceiling
- Drop in ceiling tiles
- Direct attach to furring strips/hat channel/drywall T-Grid

### LEAD TIMES

- 1-2 weeks for stock items
- 6-8 weeks for custom projects
- 10-12 weeks for large projects

### FLAMMABILITY

Class A (Per ASTM E-84)

### COLORS

Natural, White, & SonoKote custom colors



### ACOUSTICAL TEST RESULTS

Panel	Test	Result
1"	A Mount (flat against wall / ceiling)	.45
1"	C Mount (1" CFAB behind- flat on wall / ceiling)	.75
2"	A Mount (flat against wall / ceiling)	.65
2"	C Mount (1" CFAB behind- flat on wall / ceiling)	.75

(2" Results from double 1" layers)



**ACOUSTICAL | SURFACES, INC.**

**CELEBRATING 35 YEARS - SOUNDPROOFING, ACOUSTICS, NOISE & VIBRATION SPECIALISTS**  
 952.448.5300 • 800.448.0121 • sales@acousticalsurfaces.com • www.acousticalsurfaces.com

© 2017 Acoustical Surfaces, Inc. V1