

# Certificate of Testing

**N°: TRA017503CC02A**

Page 1 of 5 Pages

Echo Barrier Limited  
Dury Drive  
Woodhall Business Park  
Sudbury  
Suffolk  
CO10 1WH

Issue Date: 14<sup>th</sup> April 2014  
Our Ref: TRA-017503-01  
Client's Order Number: DJL 1403 2058  
Date(s) of Test: 7<sup>th</sup> and 8<sup>th</sup> April 2014

Attn.: David Lindsay

**Specimen:**

1 Off	Sound Barrier
Part Number:	H2 Series 1
TRaC Stores Number:	TRA-017503-S1
Receipt Date:	12 <sup>th</sup> February 2014

**Specification:** Cold Test

Testing was carried out in accordance with BS EN 60068-2-1:2007 Test Ab, Cold for non heat-dissipating specimens with gradual change of temperature.

Temperature	-40°C ± 2°C
Duration	16 hours

**Procedure:** Cold Test

The specimen was mounted in the Climatic Chamber as shown in Figure 1. The chamber temperature was then lowered to -40°C ± 2°C over a three and a half hour period. This temperature was maintained for sixteen hours before being returned to ambient over a two hour period. The specimens' external surfaces were then inspected.

**Results:** Cold Test

After testing the specimens external surfaces showed no signs of damage or degradation, as shown in Figures 2 and 3.

A chart of the temperatures recorded during the test are shown in Figure 4

Test Engineer



G. Ball Test Engineer

Approval

D. K. Morris Chief Test Engineer

Certified that the specimens detailed hereon have been subjected to the tests as required by the order unless otherwise stated above. Our technical competence and quality control arrangements are in accordance with the conditions of our UKAS accreditation. No representation or warranty is given that the Tests performed under the terms of Contract constitute, in themselves, a sufficient programme for the Customer's purpose, nor that the Customer's Equipment is suitable for any particular purpose. The contents of this Certificate shall not be reproduced, except in full, without the written approval of TRaC Global Limited.

**WARWICK**

Rothwell Road, Warwick, CV34 5JX, UK.  
T +44 (0)1926 478478 F +44(0)1926 478479 E [test@tracglobal.com](mailto:test@tracglobal.com)  
[www.tracglobal.com](http://www.tracglobal.com)



0026

# Certificate of Testing

Nº: TRA017503CC02A

Page 2 of 5 Pages



**SPECIMEN MOUNTED IN CLIMATIC CHAMBER PRIOR TO TESTING**

**FIGURE 1**

# Certificate of Testing

N°: TRA017503CC02A

Page 3 of 5 Pages



**SPECIMEN AFTER TESTING**

**FIGURE 2**





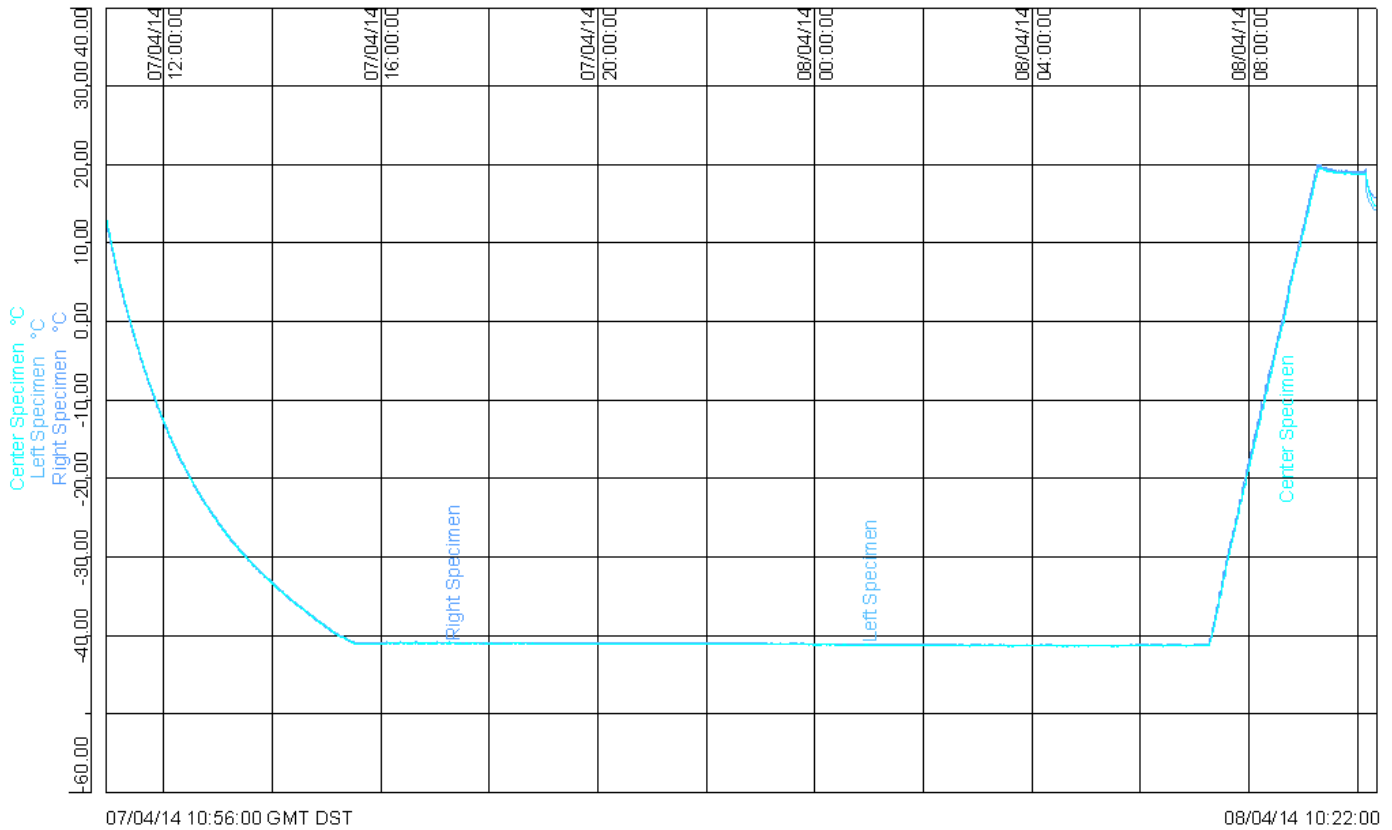
**SPECIMEN AFTER TESTING**

**FIGURE 3**

# Certificate of Testing

Nº: TRA017503CC02A

Page 5 of 5 Pages



TEMPERATURES RECORDED DURING TESTING

FIGURE 4