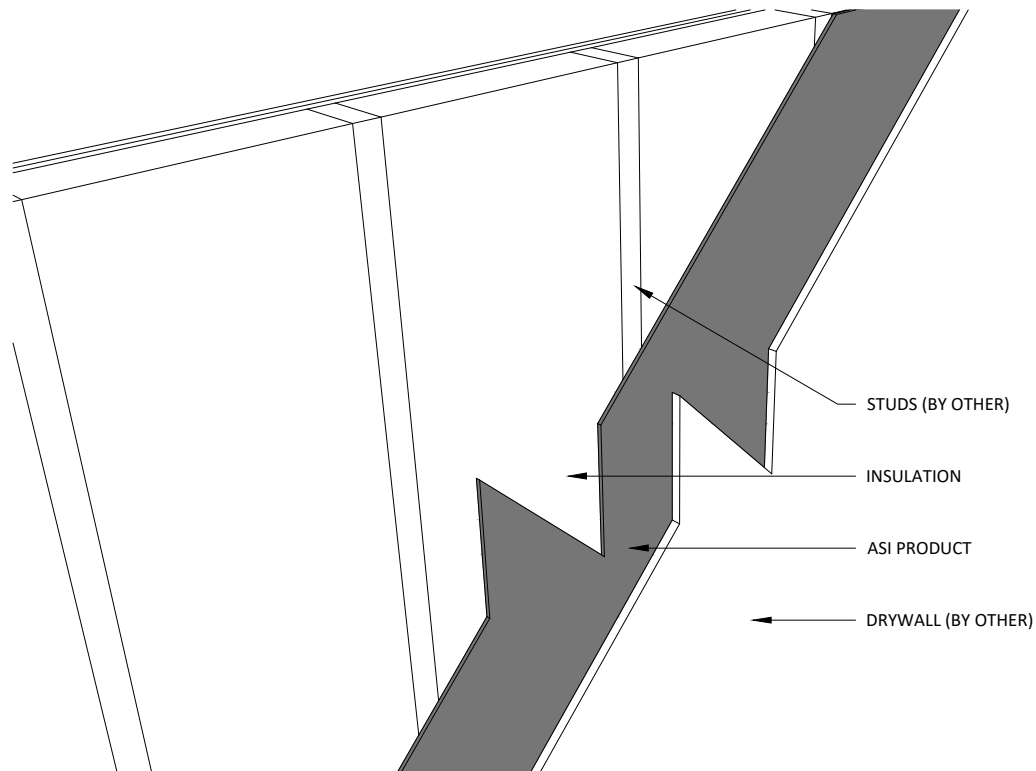


ATTENTION: If you have additional questions after reviewal of this manual please contact your local ASI representative or an ASI professional at our headquarters (952)448-5300

ASI MANUFACTURES DECORATIVE ACOUSTICAL PANELS AND PRODUCTS THAT MUST BE HANDLED WITH CARE. PRODUCTS SHOULD ONLY BE INSTALLED BY EXPERIENCED INSTALLERS.

#### RECEIVING

Prior to unpacking, check package for any obvious shipping damage. If no evidence of damage is present, move package to a dry/controlled area and inspect it for dents, breakage, or any lesser-noticeable damage that may affect enclosed panels. If damage has been identified, record it/photograph it, and open to inspect for concealed damage. If damage was transferred to the product, document/photograph the issues.



NOTE: use these instructions for both Class A Mass Loaded Vinyl Barrier and Noise S.T.O.P Vinyl Barrier.

ASI product is to be rolled out directly over studs prior to installation of gypsum board. Use a stapler to fasten product to existing structure. Center seams on studs and stagger joints. Once all ASI product is installed in this fashion, gypsum board may be screwed to studs through ASI product.