



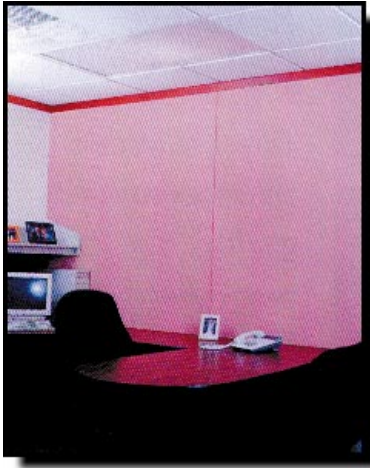
# Acoustical Surfaces, Inc.

Soundproofing, Acoustics, Noise & Vibration Control Specialists

123 Columbia Court North • Suite 201 • Chaska, MN 55318  
 (952) 448-5300 • Fax (952) 448-2613 • (800) 448-0121

Email: [sales@acousticalsurfaces.com](mailto:sales@acousticalsurfaces.com)  
 Visit our Website: [www.acousticalsurfaces.com](http://www.acousticalsurfaces.com)

We Identify and **S.T.O.P.** Your Noise Problems



## FABRIC PANEL S.T.O.P.™

Decorative Fabric Wrapped Custom Acoustical Wall Panels

### Edge & Mounting Options



**CURVED AND RADIUS WALL PANELS**  
 Curved panels and radius corners offer additional design options and add dimension to any interior space.



**EDGE TREATMENTS**

- Chemically Hardened
- Metal
- Wood Soft



**ADHESIVE MOUNTING**  
 Panels are supplied with resin hardened spots on the back. A 2" diameter dab of construction adhesive is then applied to the spot and applied to the wall. Temporary support is required to avoid slippage.



**MAGNETIC FASTENERS**  
 The magnetic fastener is applied to the panel before shipment. Permanent support is required



**HOOK AND LOOP FASTENERS**  
 The loop side of the fastener is applied to the panel at time of shipment. The hook side is attached to its mate, and when installing, the tape backing is removed and the panel is positioned on the wall. Permanent support is required.



**CONCEALED SPLINES**  
 Panels with concealed spline attachment are provided with kerfs along the edges of the panels. The spline then inserts into one panel and is mounted onto the wall. Adjoining panels are inserted into the remaining half of the spline.



**MECHANICAL CLIPS**  
 The panel clips are mounted onto the panels at the time of shipment. The wall clips are installed on the wall at the location established by the position of the panel clips or wall bars.



**IMPALING CLIP**  
 The impaling clips are screwed directly to the wall with the prongs extending outward. The glass fiber acoustical panel is positioned and pressed firmly onto the clip. Locking Adhesive is recommended with this clip mounting.